

Pre-Inspection Checklist	
Project: Taylor Wimpey North Finchley site	Date: 08 April 2025
Area: Block T4	Am / Pm: AM
Locaton: Block T4	Drawing Number: 22227-BM-T4 T5-L1-DR-A-150 C2
Weather Condition: Dry / Mild	Sheet Number: 22227-BM-T4 T5-L1-DR-A-151 C1

Table of Contents

- Setting Out Line & Level to Current Drawings
- Product Material Compliant to Engineer Architects Specification
- Rebar / Mesh if to Specified Drawing
- Correct Depth of Concrete Achieved
- Concrete Specification for Tolerance Achieved
- Additonal Measures Taken

Completed By: LP

Date Completed: 08 April 2025



Completed By: LP

Date Completed: 08 April 2025

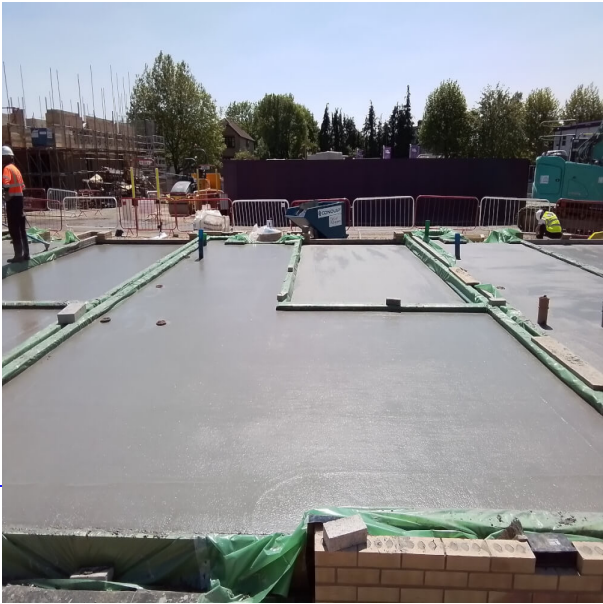


Completed By: LP

Date Completed: 08 April 2025

(a) material POLYPIPE

Completed By: LP
Date Completed: 08 April 2025



Completed By: LP

Date Completed: 08 April 2025



Additional Measures Taken

Completed By: LP
Date Completed: 08 April 2025

Proceed/not proceed

Reason for Rejection/Comments: Jetfloor products has been supplied by TW Installed as per manufacturer's details and architects drawings

Signed for HOULIHAN: Logesparan Priyaparan

Date: 2025-04-08

Signed for client by: Harvey scott

Date: 2025-05-13

The above inspections have been carried out and are acceptable/unacceptable

Non Conformities/Comments

Reason for non Conformities/Comments: na

Signed for HOULIHAN: Logesparan Priyaparan

Date: 2025-04-08

Signed for client by: Harvey scott

Date: 2025-05-13